



ROMANO GOLF VILLAS

LUXURY HOME

VILLA 4 GENERAL VIEW

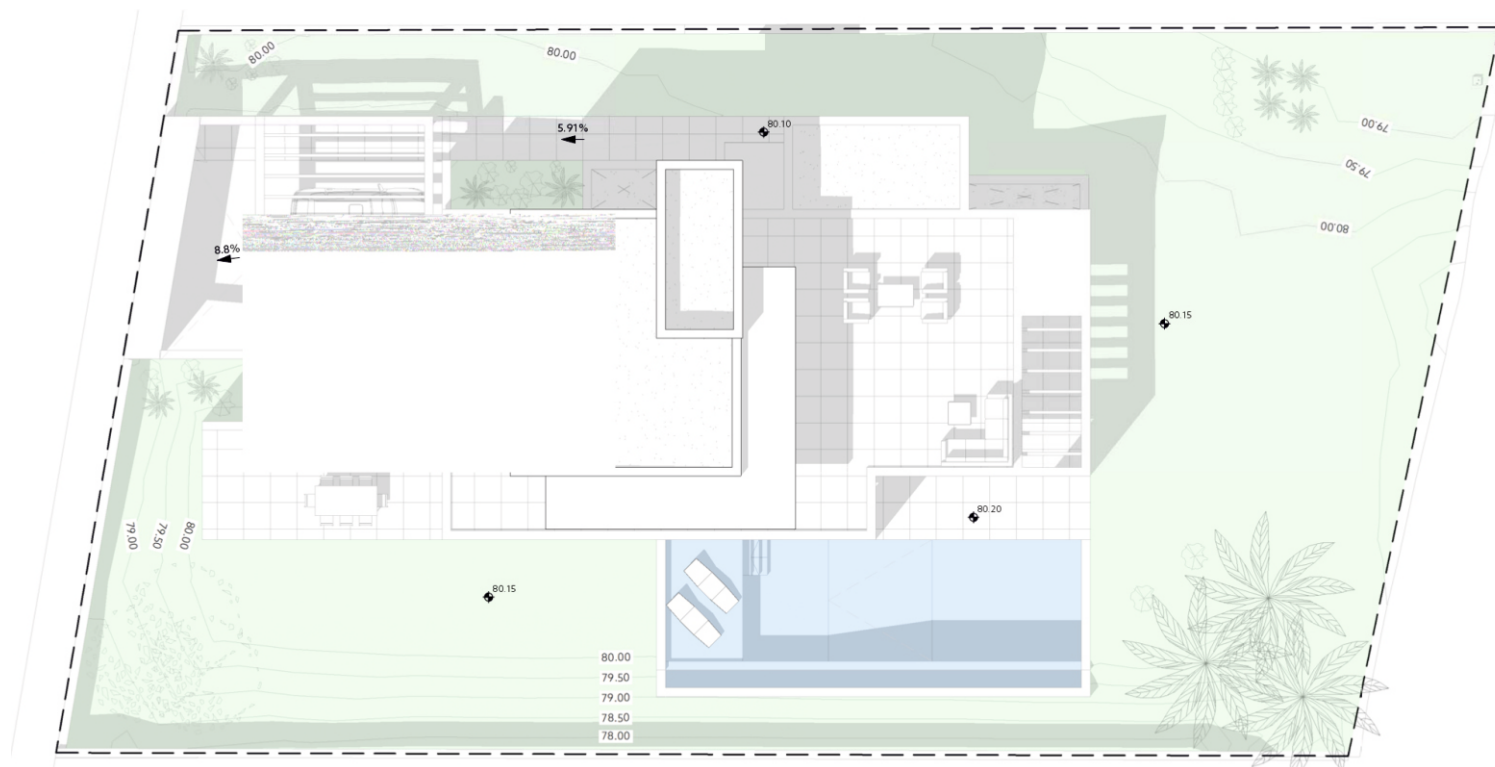
METRES

Plot	_____	1080,87 m ²
Parking	_____	42,03 m ²
Pool	_____	57,61 m ²
Dwelling	_____	532,95 m ²

Architect
Serrano Font

Developer
Obras y Servicios Vialti

romanogolfvillas.com



During the development of the project, the Management reserves the right to make the necessary changes, due to legal, administrative, technical, commercial or supply requirements, in distributions, dimensions and surfaces. In no case these changes will imply a modification of the stipulated purchase price. The furniture and any decorative elements that appear on the plans are simply a recreation for orientative and non-binding purposes, in no case are they included in the purchase price of the villa.



ROMANO GOLF VILLAS
LUXURY HOME

VILLA 4 GROUND FLOOR

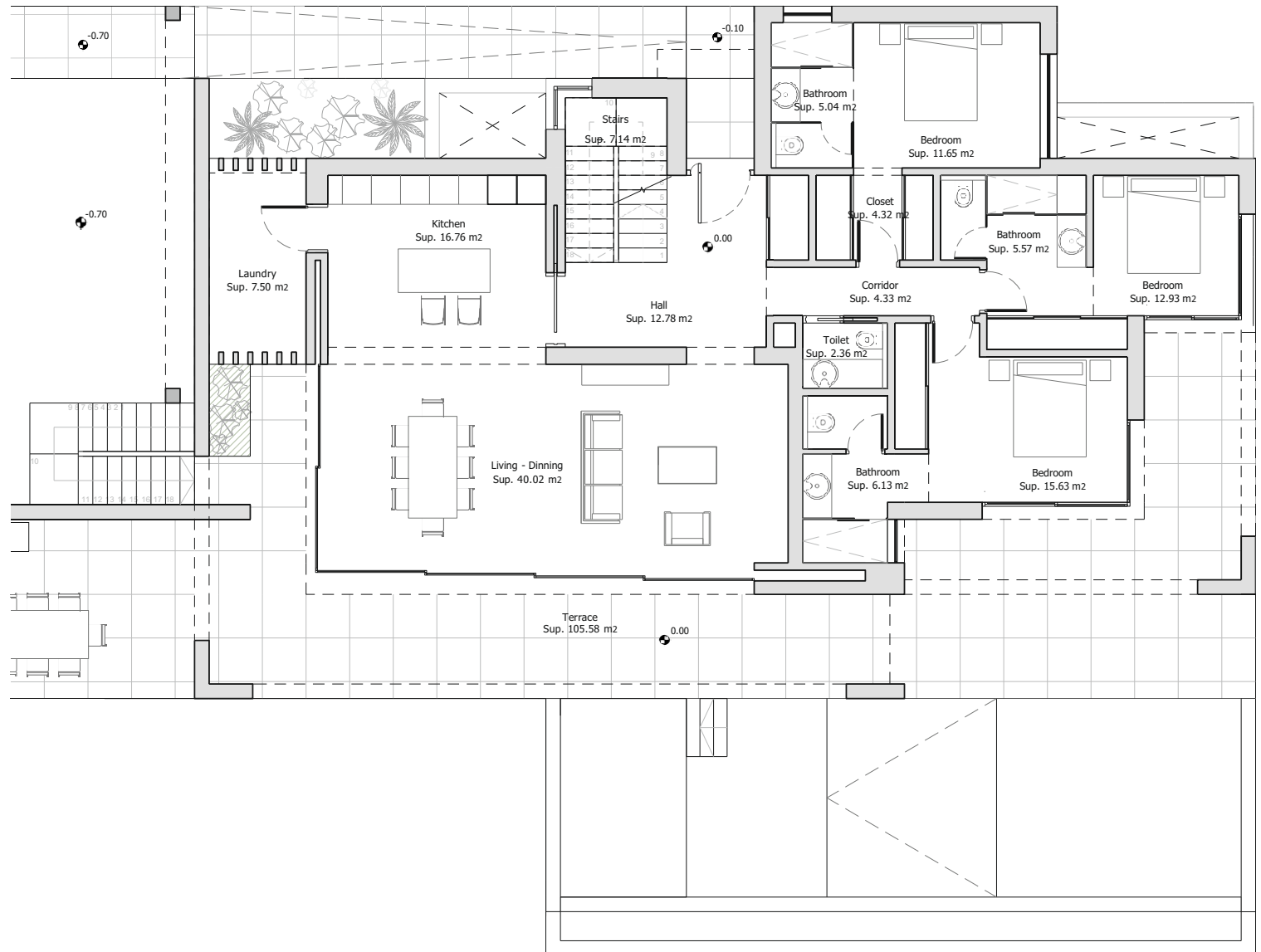
METRES

Terrace	_____	105,58 m ²
Useful	_____	152,16m ²
Built	_____	288,98 m ²

Architect
Serrano Font

Developer
Obras y Servicios Vialti

romanogolfvillas.com



During the development of the project, the Management reserves the right to make the necessary changes, due to legal, administrative, technical, commercial or supply requirements, in distributions, dimensions and surfaces. In no case these changes will imply a modification of the stipulated purchase price. The furniture and any decorative elements that appear on the plans are simply a recreation for orientative and non-binding purposes, in no case are they included in the purchase price of the villa.



ROMANO GOLF VILLAS
LUXURY HOME

VILLA 4 FIRST FLOOR

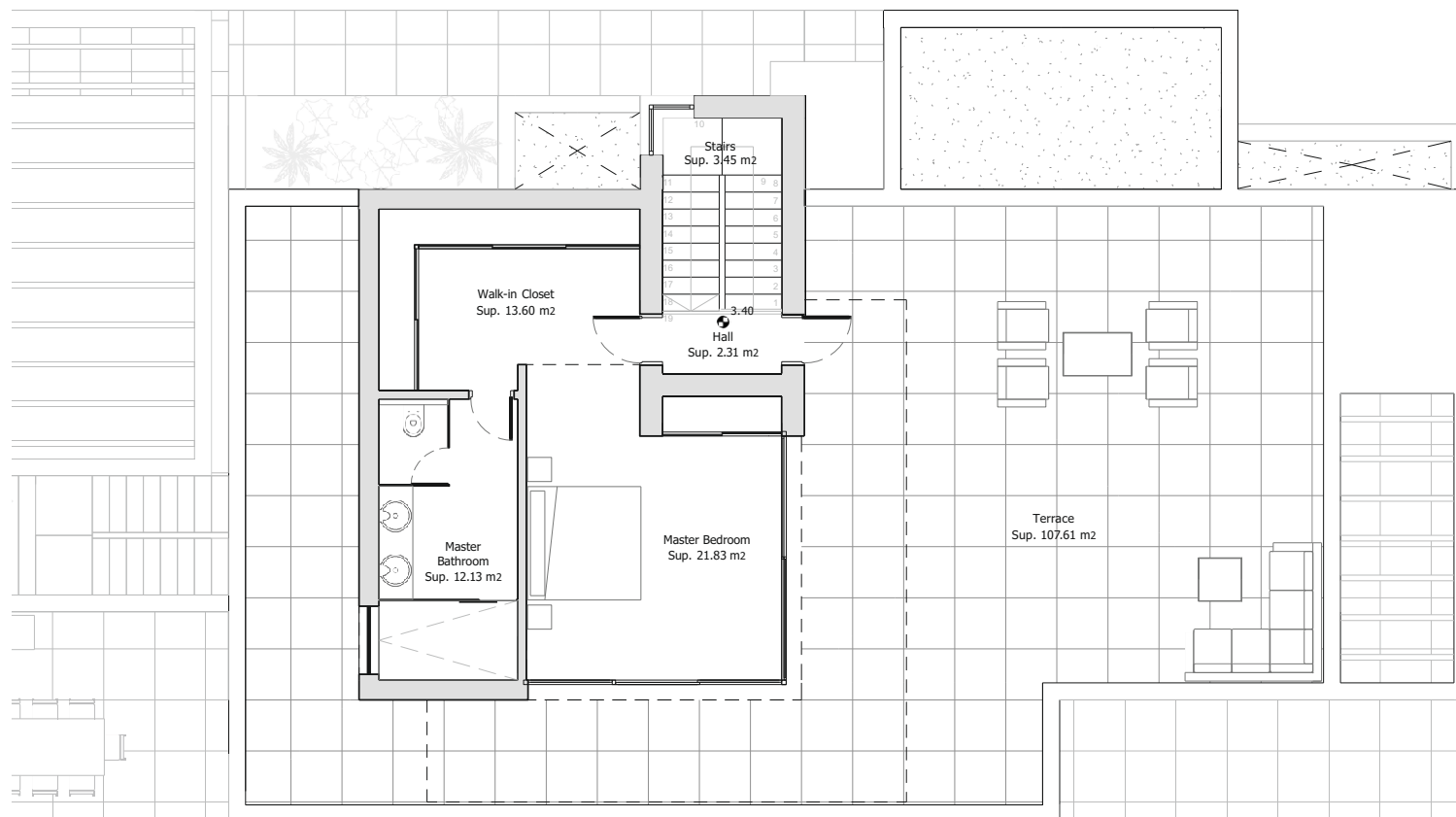
METRES

Solarium	_____	107,61m²
Useful	_____	54,80 m²
Built	_____	99,88 m²

Architect
Serrano Font

Developer
Obras y Servicios Vialti

romanogolfvillas.com



During the development of the project, the Management reserves the right to make the necessary changes, due to legal, administrative, technical, commercial or supply requirements, in distributions, dimensions and surfaces. In no case these changes will imply a modification of the stipulated purchase price. The furniture and any decorative elements that appear on the plans are simply a recreation for orientative and non-binding purposes, in no case are they included in the purchase price of the villa.



ROMANO GOLF VILLAS
LUXURY HOME

VILLA 4 BASEMENT

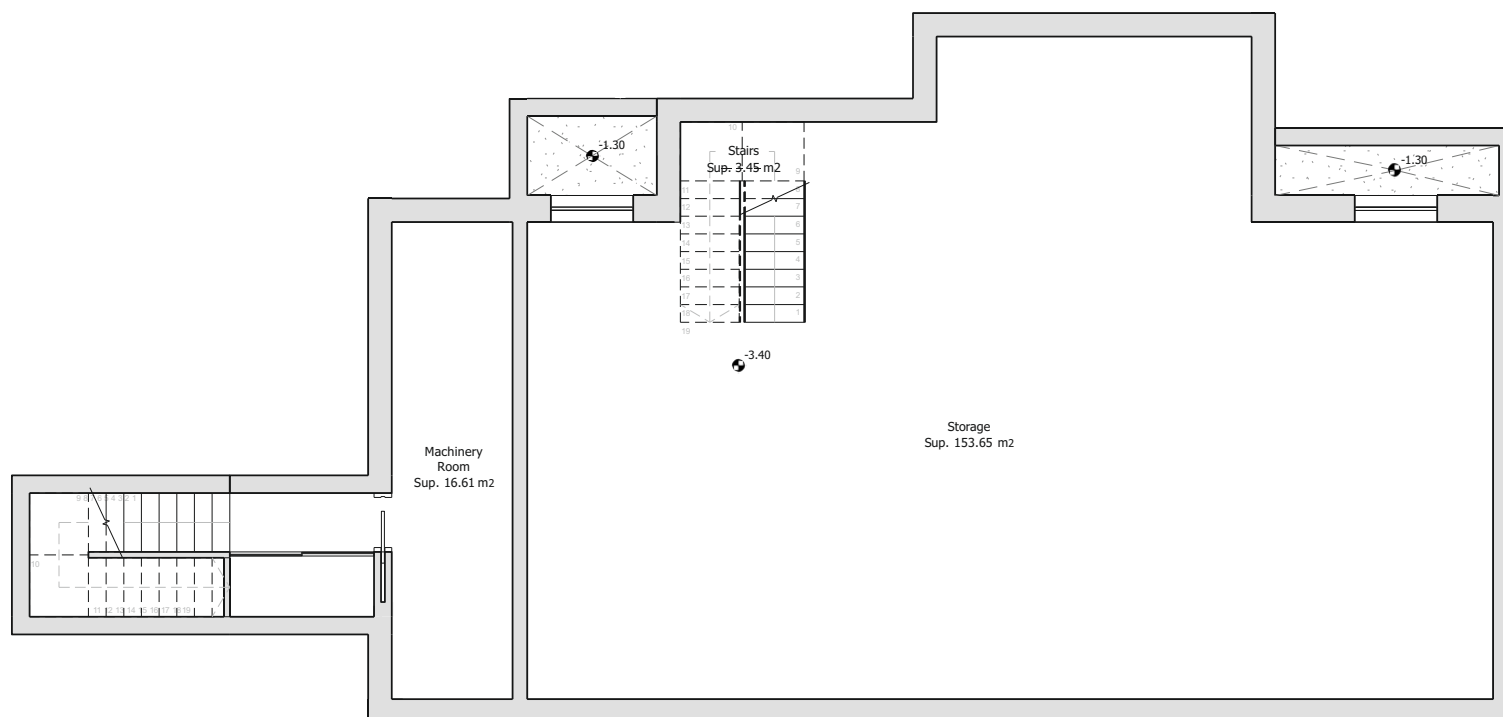
METRES

Useful _____ **173,71 m²**
Built _____ **204,09 m²**

—
Architect
Serrano Font

Developer
Obras y Servicios Vialti

romanogolfvillas.com



During the development of the project, the Management reserves the right to make the necessary changes, due to legal, administrative, technical, commercial or supply requirements, in distributions, dimensions and surfaces. In no case these changes will imply a modification of the stipulated purchase price. The furniture and any decorative elements that appear on the plans are simply a recreation for orientative and non-binding purposes, in no case are they included in the purchase price of the villa.