



ROMANO GOLF VILLAS
LUXURY HOME

VILLA 2 GENERAL VIEW

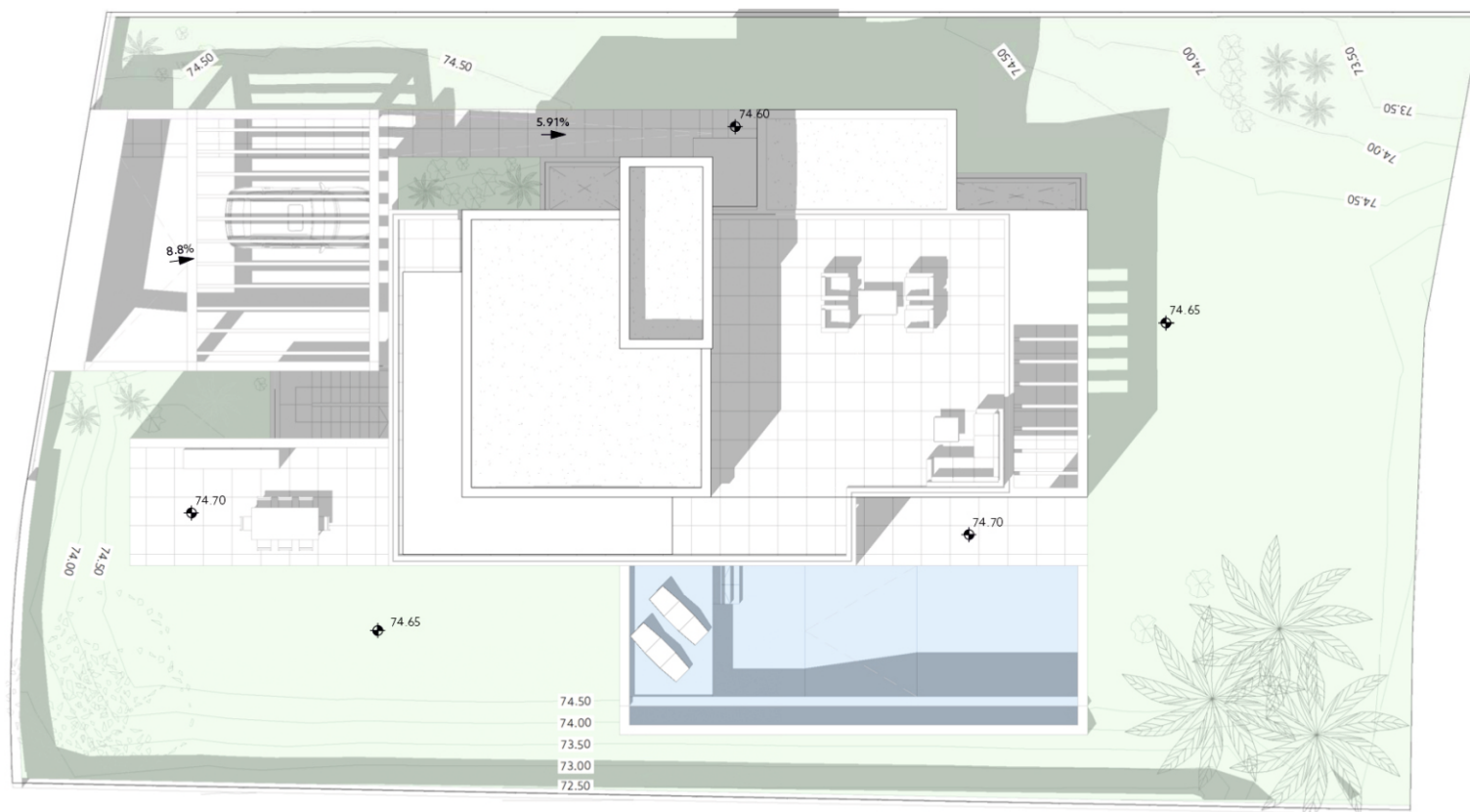
METRES

Plot	_____	1067,01 m ²
Parking	_____	42,03 m ²
Pool	_____	57,61 m ²
Dwelling	_____	449,60 m ²

Architect
Serrano Font

Developer
Obras y Servicios Vialti

romanogolfvillas.com



During the development of the project, the Management reserves the right to make the necessary changes, due to legal, administrative, technical, commercial or supply requirements, in distributions, dimensions and surfaces. In no case these changes will imply a modification of the stipulated purchase price. The furniture and any decorative elements that appear on the plans are simply a recreation for orientative and non-binding purposes, in no case are they included in the purchase price of the villa.



ROMANO GOLF VILLAS
LUXURY HOME

VILLA 2 GROUND FLOOR

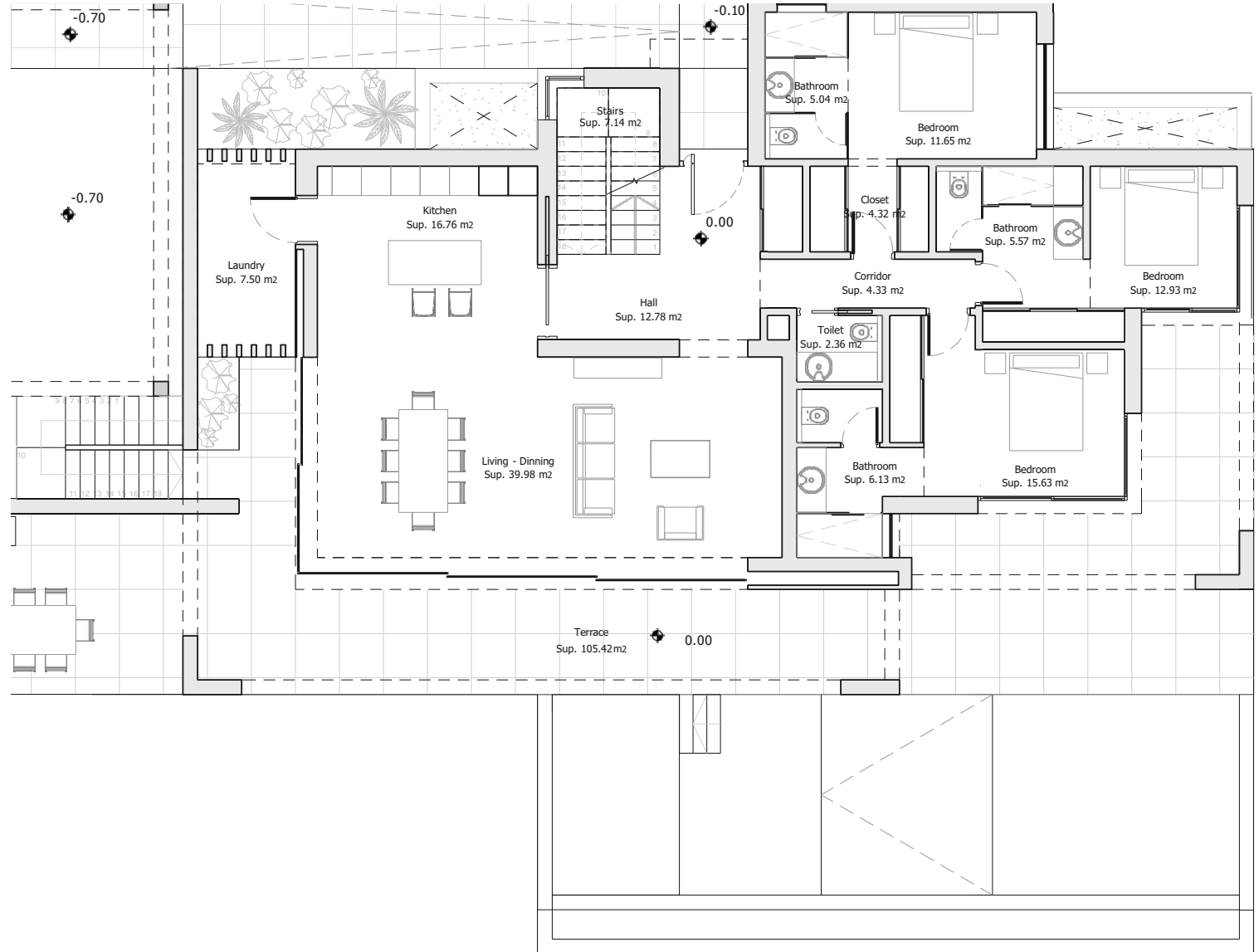
METRES

Terrace	105,42 m ²
Useful	146,07 m ²
Built	177,03 m ²

Architect
Serrano Font

Developer
Obras y Servicios Vialti

romanogolfvillas.com



During the development of the project, the Management reserves the right to make the necessary changes, due to legal, administrative, technical, commercial or supply requirements, in distributions, dimensions and surfaces. In no case these changes will imply a modification of the stipulated purchase price. The furniture and any decorative elements that appear on the plans are simply a recreation for orientative and non-binding purposes, in no case are they included in the purchase price of the villa.



ROMANO GOLF VILLAS
LUXURY HOME

VILLA 2 FIRST FLOOR

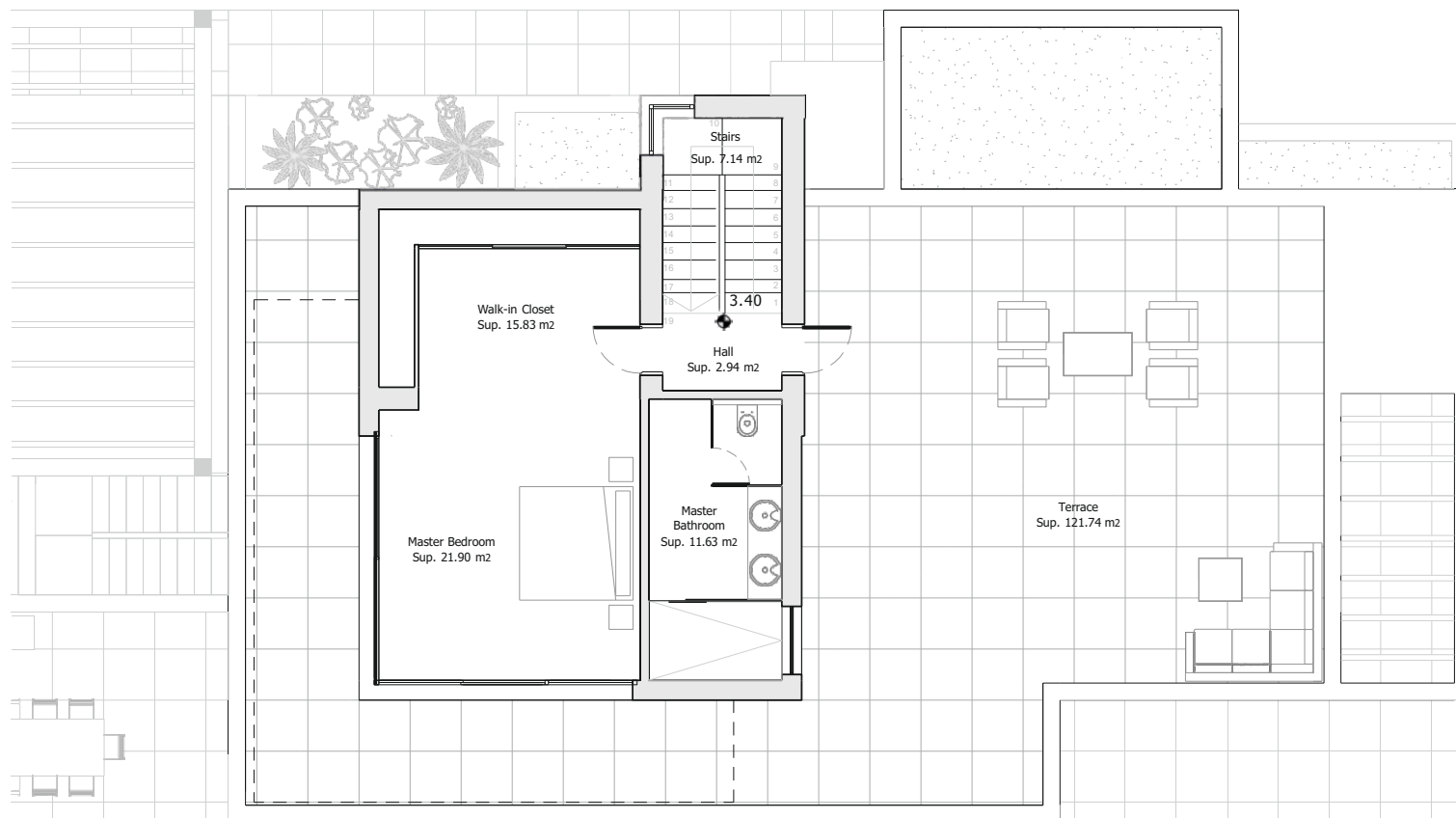
METRES

Solarium	_____	121,74 m²
Useful	_____	57,08 m²
Built	_____	71,80 m²

Architect
Serrano Font

Developer
Obras y Servicios Vialti

romanogolfvillas.com



During the development of the project, the Management reserves the right to make the necessary changes, due to legal, administrative, technical, commercial or supply requirements, in distributions, dimensions and surfaces. In no case these changes will imply a modification of the stipulated purchase price. The furniture and any decorative elements that appear on the plans are simply a recreation for orientative and non-binding purposes, in no case are they included in the purchase price of the villa.



ROMANO GOLF VILLAS

LUXURY HOME

VILLA 2 BASEMENT

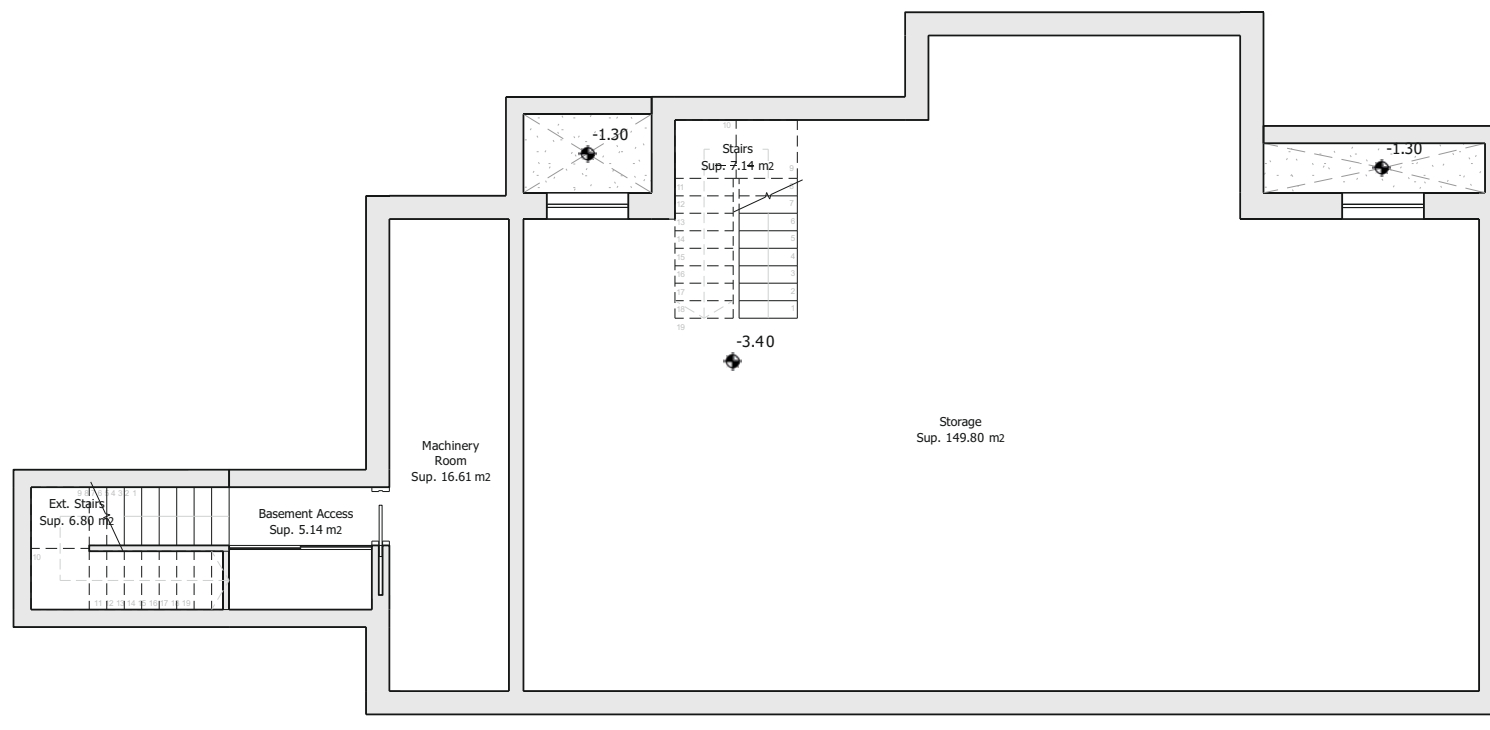
METRES

Useful _____ **242,74 m²**
Built _____ **204,24 m²**

—
Architect
Serrano Font

Developer
Obras y Servicios Vialti

romanogolfvillas.com



During the development of the project, the Management reserves the right to make the necessary changes, due to legal, administrative, technical, commercial or supply requirements, in distributions, dimensions and surfaces. In no case these changes will imply a modification of the stipulated purchase price. The furniture and any decorative elements that appear on the plans are simply a recreation for orientative and non-binding purposes, in no case are they included in the purchase price of the villa.