



**ROMANO GOLF VILLAS**  
LUXURY HOME

## VILLA 6 GENERAL VIEW

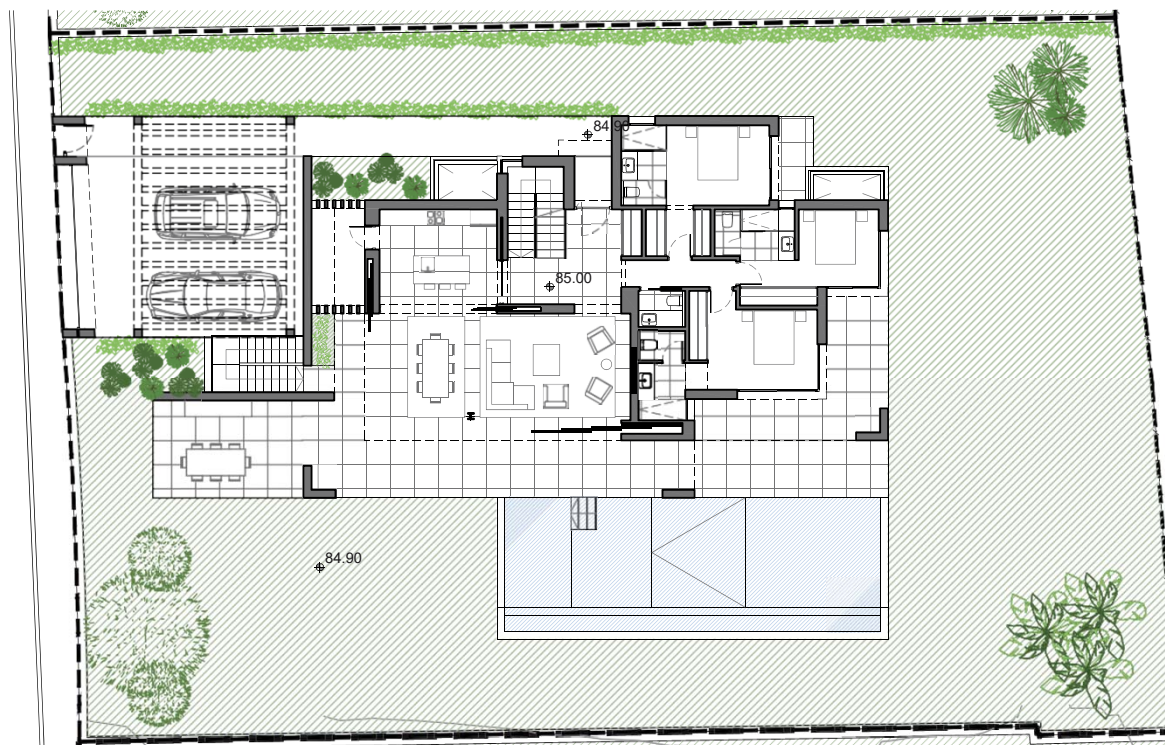
### METRES

Plot	1086,19 m <sup>2</sup>
Parking	42,03 m <sup>2</sup>
Pool	57,61 m <sup>2</sup>
Dwelling	453,70 m <sup>2</sup>

**Architect**  
Serrano Font

**Developer**  
Obras y Servicios Vialti

[romanogolfvillas.com](http://romanogolfvillas.com)



During the development of the project, the Management reserves the right to make the necessary changes, due to legal, administrative, technical, commercial or supply requirements, in distributions, dimensions and surfaces. In no case these changes will imply a modification of the stipulated purchase price. The furniture and any decorative elements that appear on the plans are simply a recreation for orientative and non-binding purposes, in no case are they included in the purchase price of the villa.



**ROMANO GOLF VILLAS**  
LUXURY HOME

## VILLA 6 BASEMENT

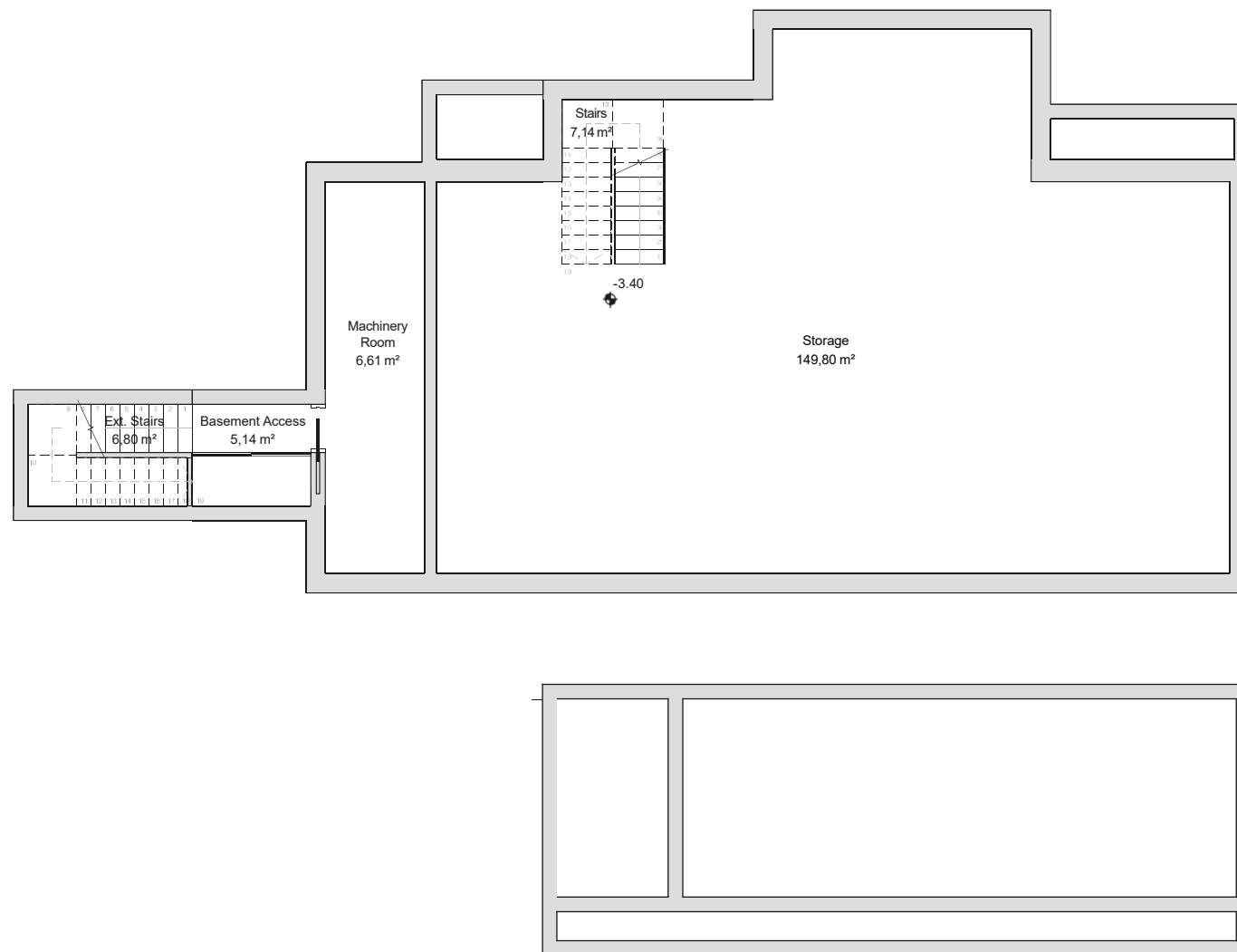
### METRES

Useful ——— 242,74 m<sup>2</sup>  
Built ——— 204,24 m<sup>2</sup>

—  
**Architect**  
Serrano Font

**Developer**  
Obras y Servicios Vialti

[romanogolfvillas.com](http://romanogolfvillas.com)



During the development of the project, the Management reserves the right to make the necessary changes, due to legal, administrative, technical, commercial or supply requirements, in distributions, dimensions and surfaces. In no case these changes will imply a modification of the stipulated purchase price. The furniture and any decorative elements that appear on the plans are simply a recreation for orientative and non-binding purposes, in no case are they included in the purchase price of the villa.



**ROMANO GOLF VILLAS**  
LUXURY HOME

## VILLA 6 GROUND FLOOR

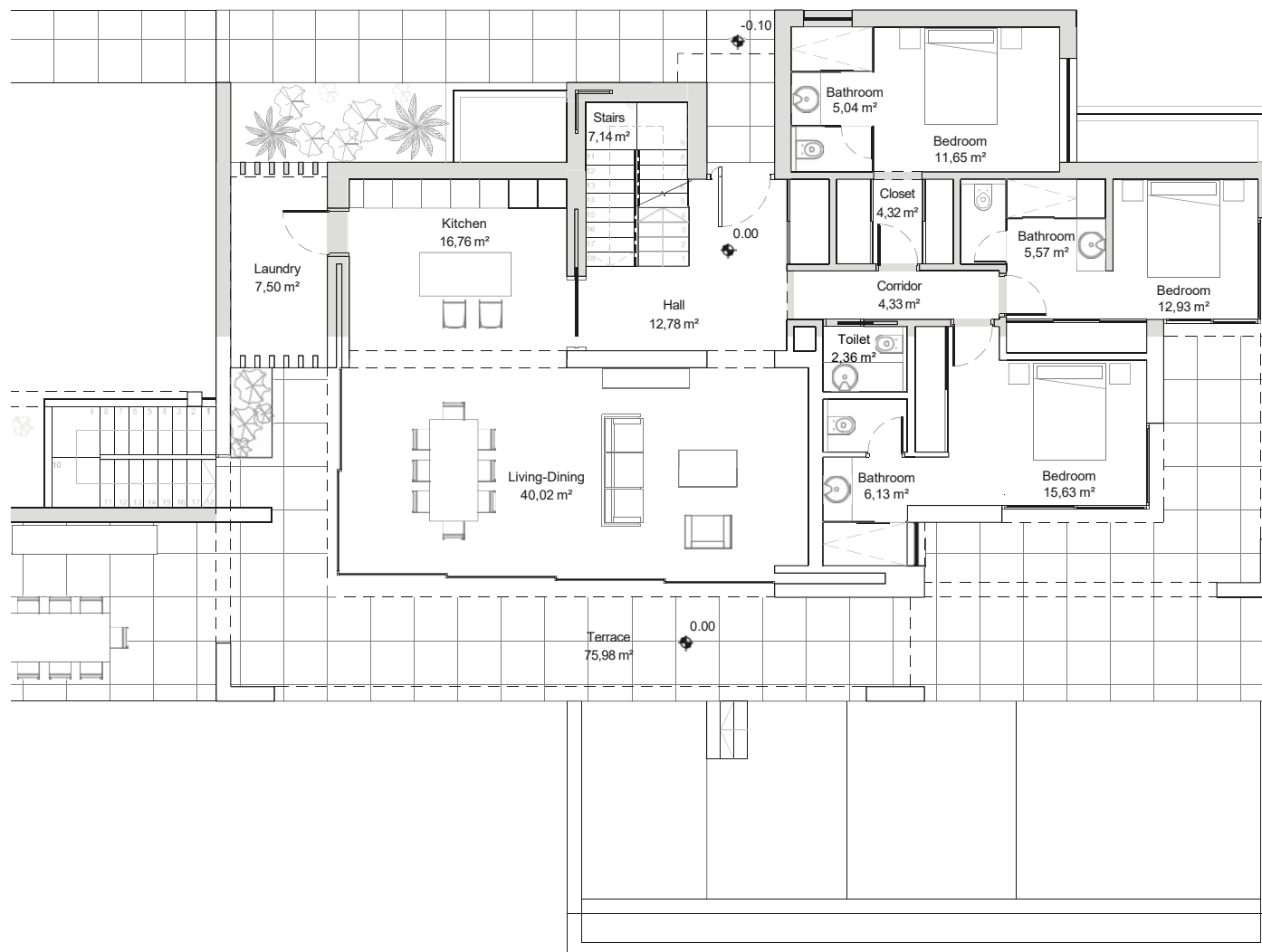
### METRES

Terrace	75,67 m <sup>2</sup>
Useful	145,61 m <sup>2</sup>
Built	177,66 m <sup>2</sup>

**Architect**  
Serrano Font

**Developer**  
Obras y Servicios Vialti

[romanogolfvillas.com](http://romanogolfvillas.com)



During the development of the project, the Management reserves the right to make the necessary changes, due to legal, administrative, technical, commercial or supply requirements, in distributions, dimensions and surfaces. In no case these changes will imply a modification of the stipulated purchase price. The furniture and any decorative elements that appear on the plans are simply a recreation for orientative and non-binding purposes, in no case are they included in the purchase price of the villa.



## ROMANO GOLF VILLAS

LUXURY HOME

### VILLA 6

#### FIRST FLOOR

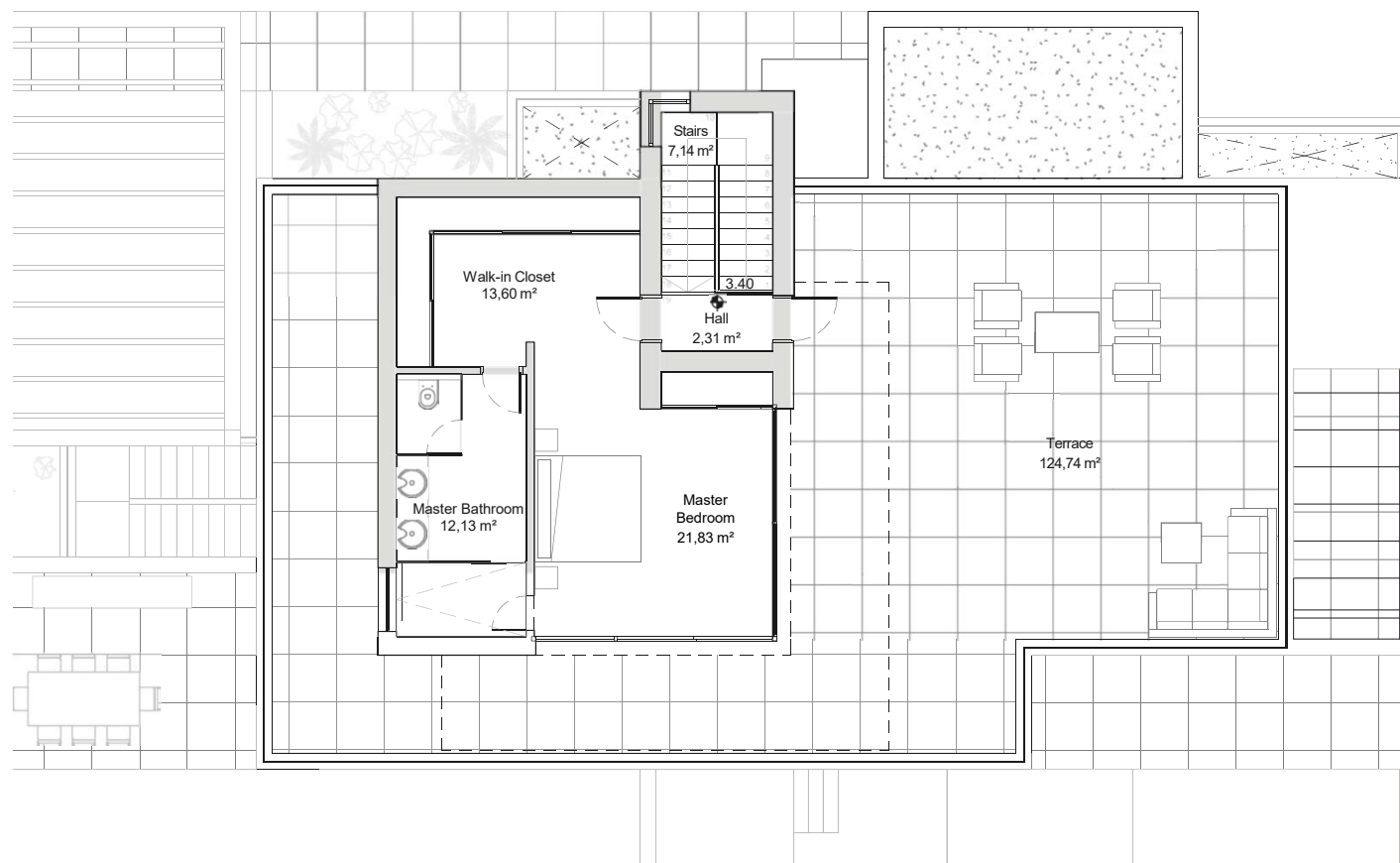
#### METRES

Solarium	121,74m <sup>2</sup>
Useful	57,06 m <sup>2</sup>
Built	71,80 m <sup>2</sup>

**Architect**  
Serrano Font

**Developer**  
Obras y Servicios Vialti

[romanogolfvillas.com](http://romanogolfvillas.com)



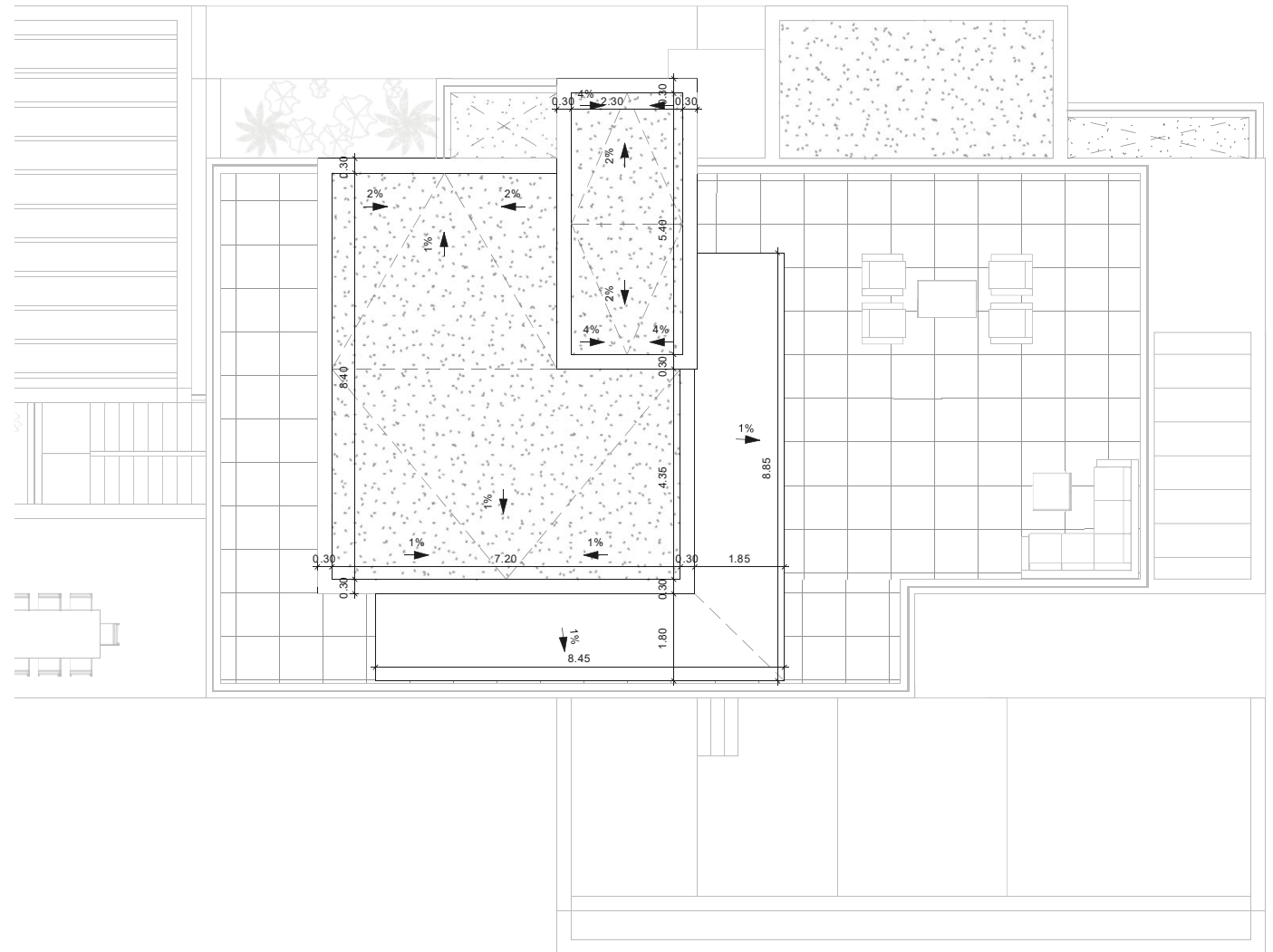
During the development of the project, the Management reserves the right to make the necessary changes, due to legal, administrative, technical, commercial or supply requirements, in distributions, dimensions and surfaces. In no case these changes will imply a modification of the stipulated purchase price. The furniture and any decorative elements that appear on the plans are simply a recreation for orientative and non-binding purposes, in no case are they included in the purchase price of the villa.



**Architect**  
Serrano Font

**Developer**  
Obras y Servicios Vialti

[romanogolfvillas.com](http://romanogolfvillas.com)



During the development of the project, the Management reserves the right to make the necessary changes, due to legal, administrative, technical, commercial or supply requirements, in distributions, dimensions and surfaces. In no case these changes will imply a modification of the stipulated purchase price. The furniture and any decorative elements that appear on the plans are simply a recreation for orientative and non-binding purposes, in no case are they included in the purchase price of the villa.